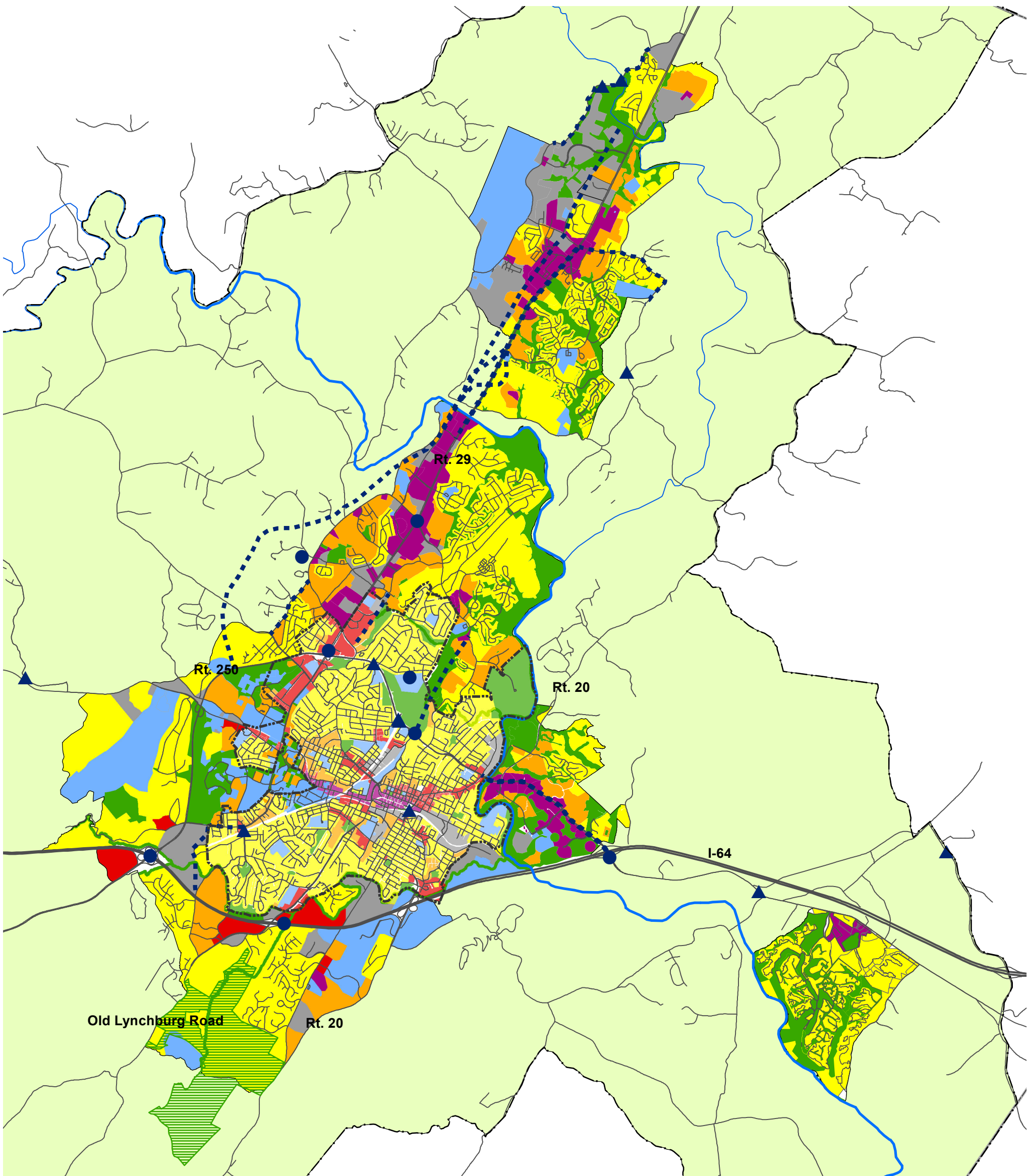


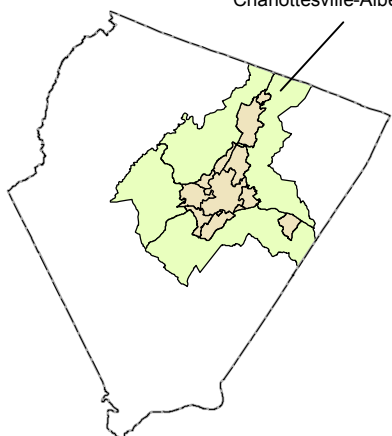
# Common Future Land Use & Transportation Projects

## DRAFT



### Albemarle County

Charlottesville-Albemarle MPO



### Legend

- Development Area
  - RURAL AREA
  - Charlottesville-Albemarle MPO
  - Charlottesville
  - Biscuit Run State Park (Future Designation)
- Roadways**
- Waterways**

- Industrial/Office Service
- Low Density Residential
- High Density Residential
- Commercial
- Mixed Use
- Greenspace
- Institutional
- Road Improvement Projects
- Bridge Projects
- Intersection Improvements

many plans  
**one COMMUNITY**  
1-community.org



Last updated 10.19.2011

## Future Land Use Map Designations by Common Designation

Common Designation	Source	Original Designation
<b>Rural Area</b>	Albemarle County	rural area
<b>Industrial/ Office Service</b>	Charlottesville	industrial
	Albemarle County	employment district heavy industrial industrial service light industrial office service office/ R&D/ flex/ light industrial
<b>Low Density Residential</b>	Charlottesville	single family two family
	Albemarle County	neighborhood density
<b>High Density Residential</b>	Charlottesville	multi-family
	Albemarle County	urban density
	UVA Grounds Plan	residential
<b>Commercial</b>	Charlottesville	commercial neighborhood commercial office
	Albemarle County	community service neighborhood service office/ regional service regional service town/ village center
<b>Mixed-Use</b>	Charlottesville	mixed use
	Albemarle County	commercial mixed use employment mixed use transitional urban mixed use (around centers) urban mixed use (in centers)
<b>Greenspace</b>	Charlottesville	greenspace
	Albemarle County	conservation easement parks & greenways private open space; environmental features public open space
	UVA Grounds Plan	natural area open space & recreation
<b>Institutional</b>	Charlottesville	insitutional
	Albemarle County	airport district institutional
	UVA Grounds Plan	athletic centers/ classrooms office/ support parking